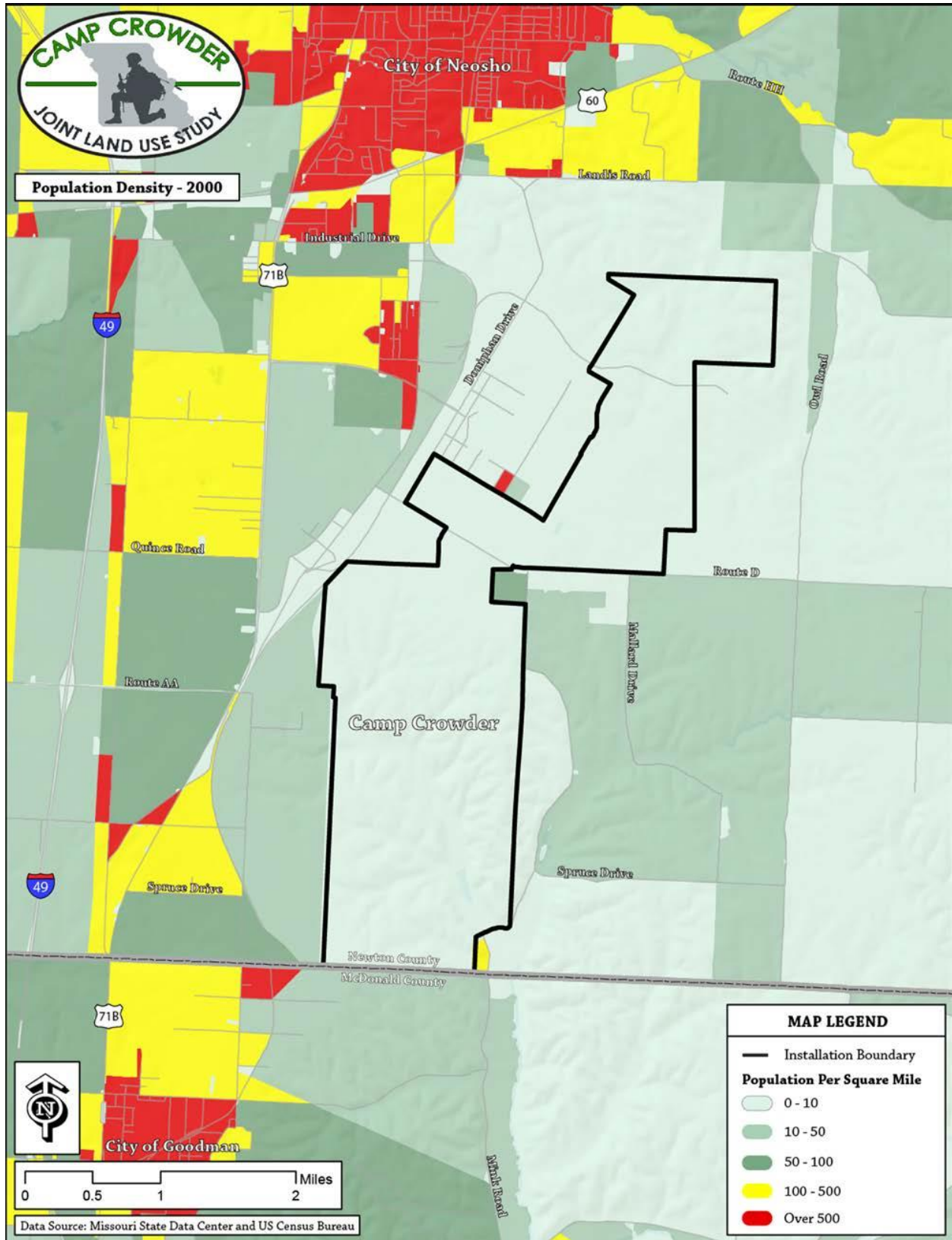
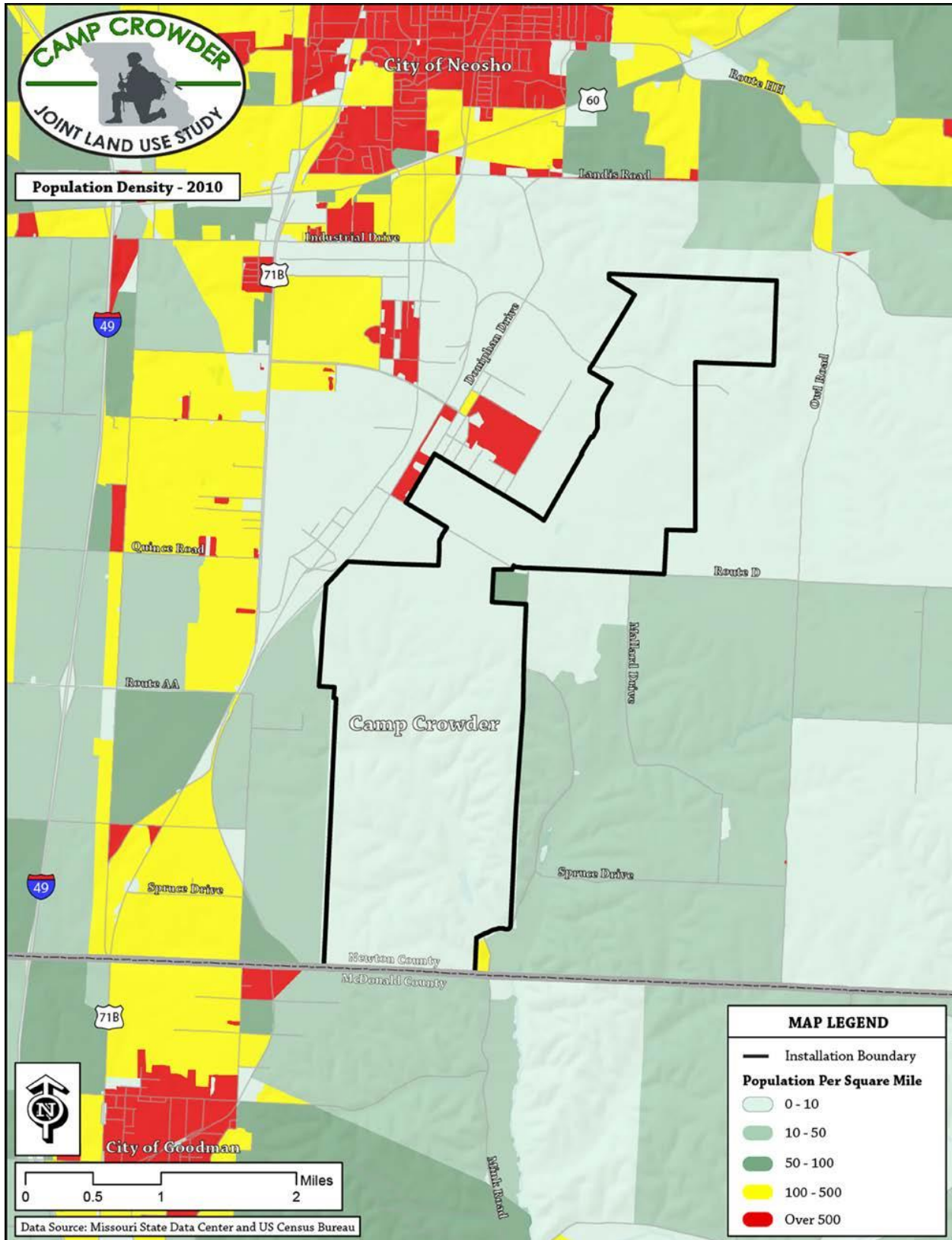


Block Level Population Density in the JLUS Focus Area - 2000



Block Level Population Density in the JLUS Focus Area - 2010



Percentage & Population Density of Urban & Rural Areas

County	Urban	Population Density	Rural	Population Density
Newton	35.6%	1,147.2	64.4%	61.7
McDonald	.01%	8	99.9%	42.8
Missouri	70.4%	2,053.5	29.6%	26.6

Source: United States Census Bureau, 2010 Census

Population Change, 1990-2010

Jurisdiction	1990	2000	% Change 1990-2000	2010	% Change 2000-2010	% Change 1990-2010	2012 Est.
City of Neosho	9,254	10,505	13.5%	11,835	12.7%	27.9%	12,121
Newton County	44,445	52,636	18.4%	58,114	10.4%	30.8%	59,069
McDonald County	16,938	21,681	28.0%	23,083	6.5%	36.3%	22,876
Newton & McDonald Counties*	61,383	74,317	21.1%	81,197	9.3%	32.3%	81,945
Missouri	5,117,073	5,595,211	9.3%	5,988,927	7.0%	17.0%	6,024,522

Source: United States Census Bureau

Projected Population Change, 2010 - 2030

Jurisdiction	2010	2020	2025	2030	% Change 2010-2030
Newton County	58,114	62,218	64,553	66,663	14.7%
McDonald County	23,083	25,625	26,823	28,078	21.6%
Counties Combined	81,197	87,843	91,376	94,741	16.7%
Missouri	5,988,927	6,389,850	6,580,868	6,746,762	12.7%

Source: <http://archive.ia.mo.gov/bp/projections/TotalPop.pdf>